

FAXCOM[®] Suite for Windows

BISCOM

Directory Enabled Fax Management

- Integrate Fax with Exchange 2003, 2007 and Active Directory
- Manage Users by Policy
- Outbound Faxing for Users & Applications
- Enable Inbound Fax Workflows with Advanced Fax Routing
- No Schema Extensions Required

Multiple Interfaces for Sending & Receiving Faxes

FAXCOM Suite for Windows supports a number of interfaces for sending and receiving faxes, including:

- Email
- FAXCOM Client
- Web Client
- APIs

The SMTP Fax Gateway within FAXCOM Suite for Windows fax enables Exchange 2003/2008 or any other SMTP system. With installation of the fax gateway, Outlook can send and receive faxes – without installation of client software. Optional installation of “Outlook Extensions” provides users with an extended feature set.

The FAXCOM Client is Biscom’s workflow-optimized desktop fax client. With a folder-based User Interface, the FAXCOM Client provides a view of pending, sent and received faxes so that users can easily manage their fax activity. Shared Mailboxes, where multiple users access a single mailbox, and the ability to create folders, subfolders and add notes — make the FAXCOM Client an attractive solution for processing received faxes through a workflow.

The Web Client provides a Website from which users can send, receive, and track their fax activity. Like the FAXCOM Client, it offers a view of pending, sent, and received faxes.

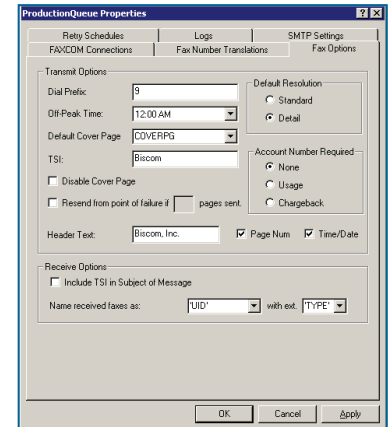
APIs provide a toolkit for sending, receiving and tracking faxes from applications or processes. FAXCOM Suite supports APIs such as:

- .NET
- Web Services
- COM
- Java
- Envelope Specification (“File Drop”)
- SMTP
- DocFlow (“Document Templating”)

Solution Architecture

FAXCOM Suite for Windows provides system management with an MMC snap-in and user management with Active Directory or any other LDAP-compatible directory service. It connects users to FAXCOM Queues via an SMTP Gateway, Web Client, FAXCOM Client, and/or APIs.

Each FAXCOM Queue (or redundant FAXCOM Queues) represents one or more applications in an enterprise, or integrates with one or more existing network services such as email, each isolated from the other.



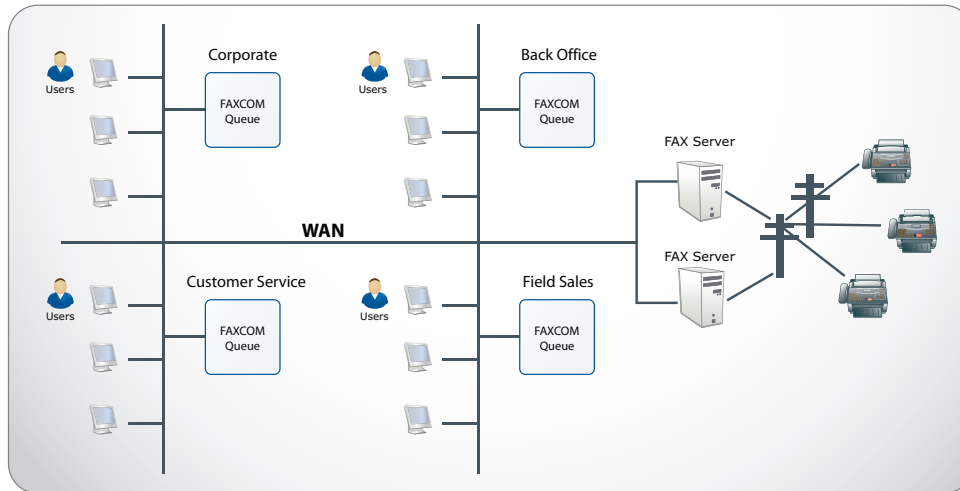
FAXCOM Suite Administration

FEATURES

- Requires no schema extensions.
- Requires no database synchronization.
- Uses Active Directory or any other LDAP-Compliant Directory Service as a fax user list.
- Manage user attributes by AD Group Policy or FAXCOM Policy.
- MMC Snap-In to manage all aspects of the fax service, including installation and removal of fax queues worldwide from a single location.
- Implement application redundancy by distribution of multiple fax queues.
- Send and receive faxes through Exchange 2007 2003, 2000 and 5.5
- Virtualization supported via VMware ESX 3.5 or higher
- Outlook integration without client software.
- Desktop and Web fax clients.
- Rich Application Programming Interfaces (APIs) to fax enable business processes and applications.
- Enable non-Windows applications and processes to access the fax service.

FAXCOM Suite for Windows

FAXCOM Suite for Windows Solution Architecture



The FAXCOM Queue configuration includes user accounts created internally or integrates with an LDAP-compatible directory service such as Active Directory. No Active Directory schema extensions are required.

Policies can be managed in the FAXCOM Queue or within Active Directory Group Policy. These policies can be used to determine which users have access to the FAXCOM Queue, as well as set user options such as the default cover page. Management by policy gives an administrator powerful leverage to manage large numbers of users by allowing users to automatically inherit the proper settings when they are added or moved to a different business unit.

User information is read from and managed directly within the directory service. This allows for the most up to date information as well as not requiring redundant user information stored at the FAXCOM Queue level. User management occurs within the directory service itself, making synchronization unnecessary.

FAXCOM Queues can be added, managed, upgraded or removed remotely on servers using a single instance of FAXCOM Suite for Windows.

FAXCOM Queues can be managed independently in order to preserve security and performance of other FAXCOM Queues.

Each FAXCOM Queue has its own individual configuration which includes standard fax settings such as retry tables, cover pages, header, TSI information, and priority.

A FAXCOM Queue can be set up with rules that restrict faxing to certain ranges of numbers in order to meet compliance guidelines.

Advanced Fax Routing

The Advanced Fax Routing module within FAXCOM Suite for Windows provides an extensive set of features for processing and delivering received faxes, often initiating a fax workflow. Delivery instructions could be simple, such as route all faxes sent to a given fax number to a particular user. Or delivery instructions could be advanced, such as extracting information from the fax image and using this information to perform a database lookup for delivery instructions.

About Biscom

Biscom offers twenty three years of experience as a full-service provider of fax server and fax software solutions for organizations that have intensive, mission critical fax requirements. Biscom's information delivery solutions integrate, process and automate the flow of documents, enabling users to streamline the handling and management of documents and assist organizations in complying with government regulations. Biscom offers its customers a full-service approach that is consultative and designed to understand customer requirements.

Microsoft
GOLD CERTIFIED
Partner

BISCOM

321 Billerica Road, Chelmsford, MA 01824
p: 800-477-2472 | sales@biscom.com
www.biscom.com